

# ELECTRIC & HYDRAULIC VALVES | GEM & G75

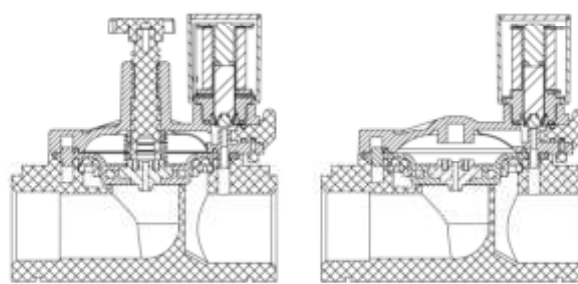
## G75-S | Electric 3/4" - 2" 2 Way NC



G75-S | 1" | NC with plastic manual override



G75-S | 2" | NC Latch with handle manual override



Flow direction →  
with flow control      without flow control

### Technical Data

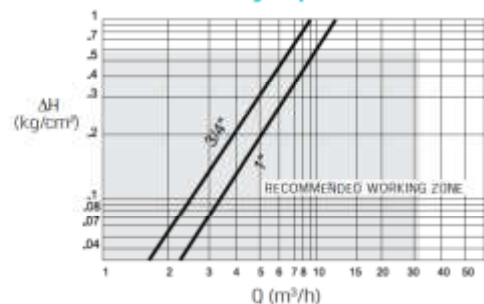
Function	2 Way NC
Ports size	3/4", 1", 1-1/2", 2" BSPT & NPT
Pressure range	0.3 to 10bar
Temperature range	<b>Fluid</b> : 5°C to 50°C (no freezing) <b>Ambient</b> : -10°C to 50°C
Materials in contact with media	<b>Manual override:</b> Reinforced Nylon <b>Main Valve:</b> Reinforced Nylon <b>Solenoid Operator:</b> Stainless Steel AISI 300 & 400 series <b>Diaphragm:</b> 3/4" - 1" : EPDM   1-1/2" - 2" : NR <b>Seals:</b> Buna - N <b>Spring:</b> Stainless Steel AISI 300 series
Solenoid	<ul style="list-style-type: none"> <li>G75, 2W NC solenoids, all voltages.</li> <li>AC, DC and Latch</li> </ul>
Coil voltage	<ul style="list-style-type: none"> <li>Voltage and power consumption - see table</li> <li>All Baccara coil voltages are ± 10% of nominal</li> </ul>

### Voltage & Power Consumption

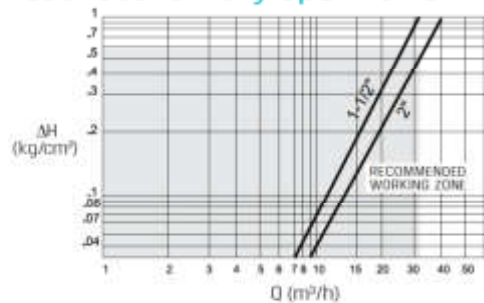
	AC (W) 50 Hz	DC (W)
V	2	4.5
12	•	•
24	•	•
110	• 2W only	

• Available options

### Head loss for fully open valve



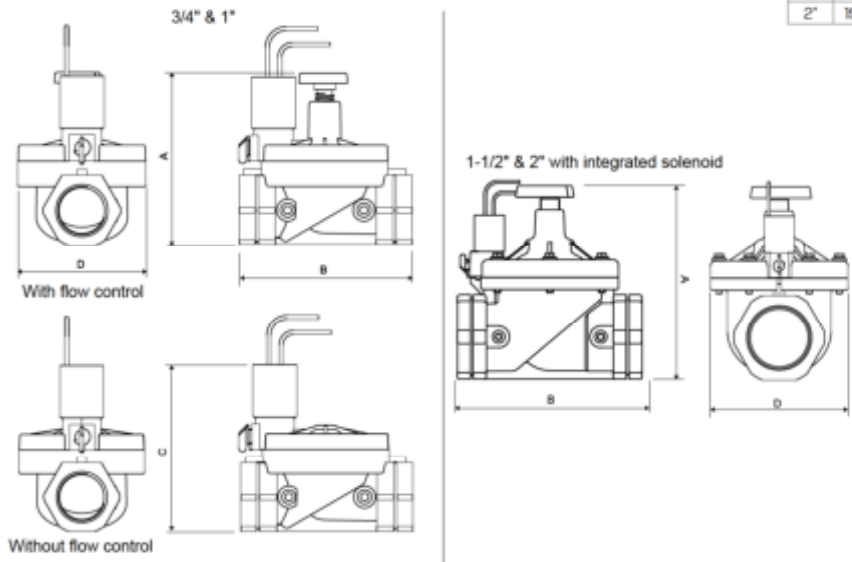
### Head loss for fully open valve



### Voltage & Current table

Solenoid	Voltage	Inrush [A]	Holding [A]
2W 50 Hz	V +10% n-20%	0.3	0.19
2W 60 Hz		0.2	0.14
3W 50/60 Hz		0.125	0.125
DC		4.5W	

Dimensions



Size	A	B	C	D	Weight (gr)
3/4"	105	110	105	81	230
1"	112	110	112	81	230
1-1/2"	180	160	126	127	740
2"	190	170	126	127	790

How to Order

G75-S	-	PORT		FUNCTION		MANUAL OVERRIDE		FLOW CONTROL		VOLTAGE		WIRES	
		3/4" BSPT	50	2W NC	1	None	0	with	5	24V AC	1	two	null
		3/4" NPT	51			Plastic	1	without <sup>(1)</sup>	6	12V AC	3	three <sup>(2)</sup>	a
		1" BSPT	60			Handle <sup>(2)</sup>	2			12V DC	4		
		1" NPT	61							24V DC	5		
		1-1/2" BSPT	70							24 Latch(23Ω)	6		
		1-1/2" NPT	71							110V AC	7		
		2" BSPT	80							6 Latch (4Ω)	B		
		2" NPT	81							12 Latch(9Ω)	C		
										16 Latch(12Ω)	D		

Example : G75-S-501051

G75 electric valve, 3/4" BSPT, 2W NC, no manual override, with flow control, 24V AC, two wires.

G75-S - 50 1 0 5 1

(1) For Latch only  
(2) 3/4", 1" valves only

\* To order valves manufactured according to your specific requirements, please contact our technical sales department.