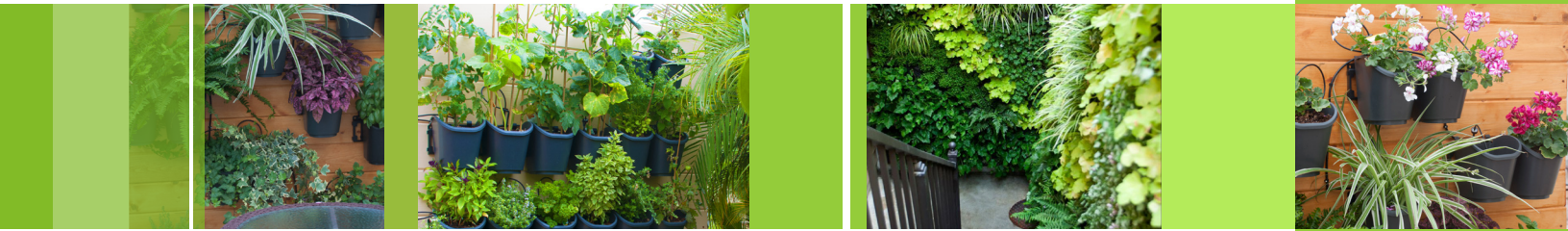


living wall™

A MODULAR VERTICAL GARDEN SYSTEM

product data sheet



Install, irrigate and watch your world grow

DIG's new **living wall™** modular vertical garden system features a new concept allowing the quick positioning, mounting, and expansion of planted pots vertically. The system utilizes framed mounting brackets, which may be attached to any interior or exterior structure to transform a space into a **green, growing environment**.

Product highlights

- Living Wall Modular Vertical Garden System provides for placement of pots where you want them
- Unique design with simple self-lock position of the mounting bracket allows for quick and easy system installation
- A convenient, durable wall mounting bracket allows the pots to be easily hung and removed from the wall
- Offers the ability to add, remove, replant, and re-hang the pots quickly and easily
- Low maintenance system that has an open area between the pots and the wall, providing protection from moisture and preventing discoloration of the exposed wall
- Designed with water supply pipeline to run above the pots
- Easy to set up and maintain, either inside or outside, including on walls or balconies
- Offers a wide range of possibilities for both commercial and residential applications
- Superior quality and cost-effectively, giving every customer an exceptional experience from start to finish

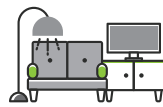
Applications



gardens



kitchens



living rooms



shopping malls



public buildings



hotels



airports



freeway structures



1210 Activity Drive
Vista, California 92081

(800) 322-9146
(760) 727-0914
fax (760) 727-0282

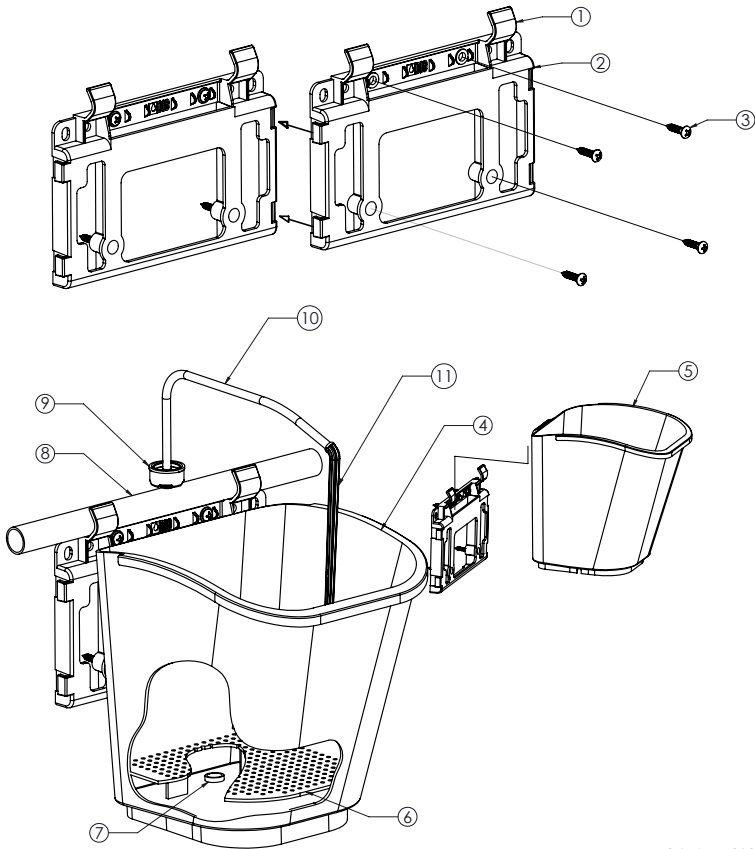
www.digcorp.com
info@digcorp.com

Product Specifications

- Small pot size: 4 ¾" (12 cm) Width x 5.½" (14 cm) Depth x 6 ½" (16 cm) Height
- Large pot size: 6 7/8" (17 cm) Width x 6 7/8" (17 cm) Depth x 6 ½" (16 cm) Height
- Pots weight:
 - Small pot: .367 lbs. (.166 kg)
 - Large pot: .592 lbs. (.269 kg)
- Pot color: Grey
- Wall mounting bracket: 7" (17.8 cm) Width x .7" (1.7 cm) Depth x 4.5" (11 cm) Height
- Wall mounting bracket color: Black
- Screw size: # 8 x ¾" Length
- Wall mounting bracket weight: .121 lbs. (0.055 kg)

Drip Irrigation Specifications

- Drip emitter operating pressure: 10-50 PSI
- PC drip emitter with check valve flow rates and color codes:
 - .3 GPH (1.2 L/H) color gray
 - .6 GPH (2.1 L/H) color brown
- Dropper inlet size: 1/4" barbed
- Dropper outlet side: 1/8" barbed
- Required opening pressure: 4.3 PSI
- Closing pressure: 2.2 PSI
- Distribution tubing material: Vinyl
- Distribution tubing size: .125 (3 mm) ID x .187 (4.7 mm) OD
- Available length of distribution tubing: Pre-cut or 1000 feet (300 m)



Legend

- ① Drip Tubing Holder
- ② Wall Mounting Brackets
- ③ Screw #8 x 3/4"long
4 Screws per Bracket
- ④ Large Pot, 6.875" (17.5cm) Width x 6.875" (17.5cm) Depth x 6.5" (16.5cm) Height with Bottom Mesh Plate
- ⑤ Small Pot, 4.750" (12 cm) Width x 5.5" (14 cm) Depth x 6.5" (16.5cm) Height with Bottom Mesh Plate
- ⑥ Mesh Plate
- ⑦ Raised Drain Hole
- ⑧ 1/2" Drip Tubing
- ⑨ PC-CV Dripper with Check Valve
 - a. .3 GPH (1.2 L/H) Color Gray
 - b. .6 GPH (2.1 L/H) Color Brown
- ⑩ 1/8" Micro Tubing
- ⑪ 6" Stake

1 Living Wall Vertical Mounting System
Living Wall, Vertical Garden

NOT TO SCALE

